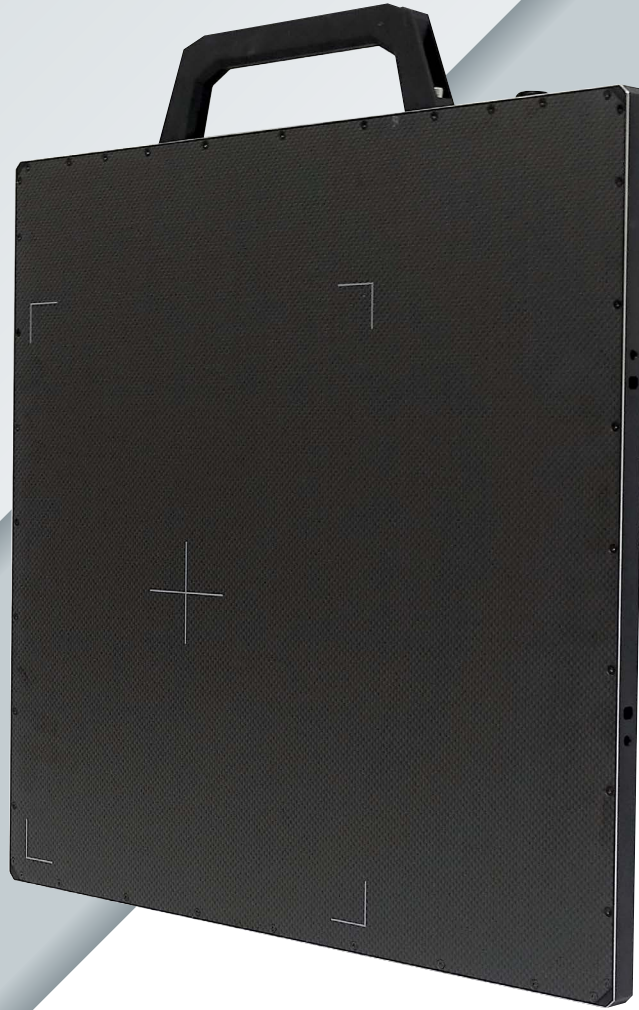


MADE FOR HIGH ENERGIES

DRC 2430HE NDT

HIGH-RESOLUTION FLAT PANEL DETECTOR



Digital Intelligence - Ready to Change.
www.duerr-ndt.com



Technical data

DRC 2430HE NDT

Active area	233 mm x 291 mm (9.2" x 11.5")
Dimensions (H x W x D)	430 mm x 380 mm x 19 mm
Weight	3.9 kg (8.6 lbs)
Number of pixels	3072 x 3840
Exposure time	500 ms to 180 s
Image transfer time	2 s
Max. energy	350 kV* (for long life in typical applications), Isotopes (higher energies possible)
Pixel pitch	76 µm
Scintillator	GOS
ADC	16-bit
Interface	Gigabit Ethernet
Operating conditions	0 to 45°C (32 to 113°F), 30 to 85 % humidity
Protection level	IP67 (dust-tight and waterproof)
Housing	Aluminum frame, carbon-fiber front (150 kg area load)
Software	DÜRR NDT D-Tect 9.9 or higher
Scope of supply	Detector, Ethernet and power adapter cable set (5.5 m), power supply

*external shielding required for over 350 kV

Important features

- ✓ High resolution 76 µm pixel pitch (6.5 lp/mm)
- ✓ Suitable for X-ray and gamma sources
- ✓ Equipped with an internal shielding for use up to 350 kV*
- ✓ Robust design with handle for easy portability
- ✓ Dust-tight and waterproof
- ✓ For stationary and mobile applications

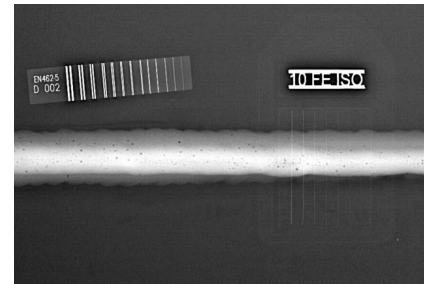


Waterproof hard case for safe transportation with retractable handle and wheels. 15 kg (33 lbs) total weight including detector and standard scope of supply.

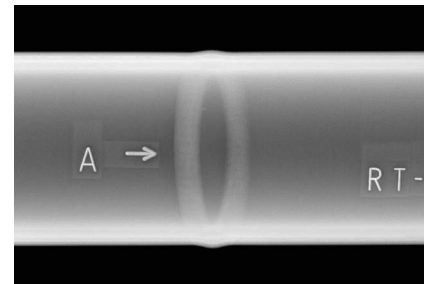


Optional shielding cassette for energies up to 450 kV.

Sample images



Stainless steel plate, $t = 10$ mm, weld seam with gas inclusions (pores).



Stainless steel tube, DN 55 mm, $t = 6.4$ mm, ellipse technique.